



Church View, Barlborough, Chesterfield, Derbyshire S43 4HH

 3

 1

 1

EPC

D

£800 PCM

P I N E W O O D



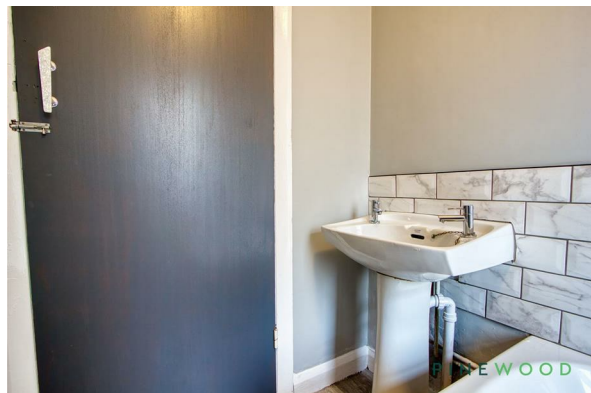
Church View Barlborough Chesterfield Derbyshire S43 4HH



£800 PCM

3 bedrooms
1 bathrooms
1 receptions

- Council Tax Band: A - Bond: £923
 - 3 spacious bedrooms
 - 1 modern bathroom
 - Semi-detached house
 - Cosy reception room
- Located in Church View, Barlborough
 - Near Barlborough amenities
- Easy access to Chesterfield - And M1 for commuting
 - Ideal for families
 - Viewing recommended





With three well-proportioned bedrooms, this property offers ample space for comfortable living. The inviting reception room serves as a perfect gathering space for family and friends, creating a warm and welcoming atmosphere. The modern kitchen is also a standout, featuring modern appliances and ample space to entertain guests or cook for the family. Not to mention the convenient store and storage spaces connected to the kitchen area.

The house features a well-appointed bathroom, ensuring convenience for all residents. The layout of the home is designed to maximise both space and functionality, making it an ideal choice for those seeking a practical yet cosy environment.

Barlborough is known for its friendly community and convenient amenities, providing a peaceful setting while still being within easy reach of Chesterfield and its vibrant offerings. The surrounding area boasts beautiful countryside, perfect for leisurely walks and outdoor activities.

This property is not just a house; it is a place where memories can be made. With its appealing features and prime location, it is sure to attract interest. Do not miss the chance to view this lovely home and envision your future in this delightful setting.

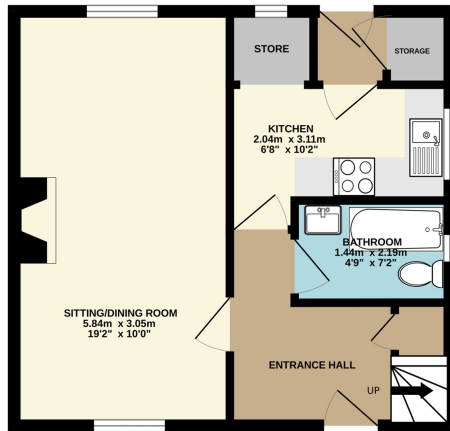
Video tour available

****If you would like to view this property, or apply for it, please click the 'Request Details' button on Rightmove and enter your information****

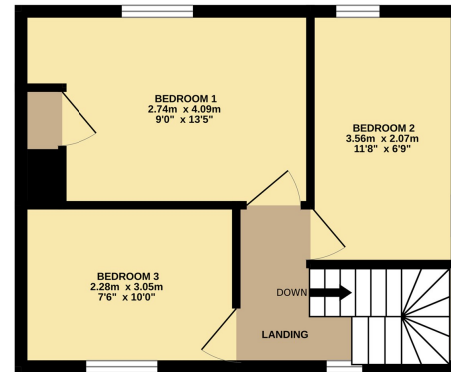
DISCLAIMER RENTAL

These particulars do not constitute part or all of a contract. While we endeavour to make our particulars fair, accurate and reliable, they are only a general guide to the property the photos are for reference purpose only, the white goods advertised may not be in situ and and if there are any points which are of particular importance to you or any particular white goods required please check with the office and we will be pleased to check the position on these

GROUND FLOOR
35.4 sq.m. (381 sq.ft.) approx.

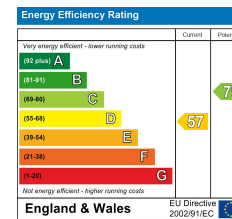


1ST FLOOR
30.5 sq.m. (328 sq.ft.) approx.



TOTAL FLOOR AREA : 65.9 sq.m. (709 sq.ft.) approx.

Whilst every attempt has been made to ensure the accuracy of the floorplan contained here, measurements of doors, windows, rooms and any other items are approximate and no responsibility is taken for any error, omission or mis-statement. This plan is for illustrative purposes only and should be used as such by any prospective purchaser. The services, systems and appliances shown have not been tested and no guarantee as to their operability or efficiency can be given.
Made with Metropix ©2025



Mansfield branch
24 Albert Street
Mansfield, NG1
01623 621001

Clowne branch
26 Mill Street,
Clowne, S43 4JN
01246 810519

Clay Cross branch
20 Market Street,
Clay Cross, S45 9JE
01246 251194

Chesterfield branch
33 Holywell Street,
Chesterfield, S41 7SA
01246 221039

PINEWOOD

